

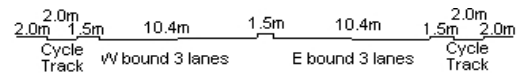
YEAR 2018

CORE STATION 5019

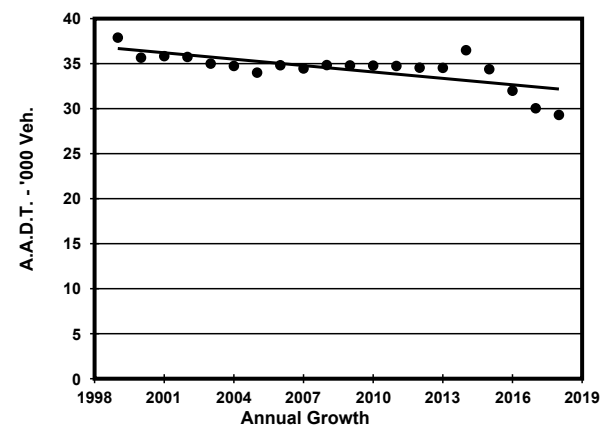
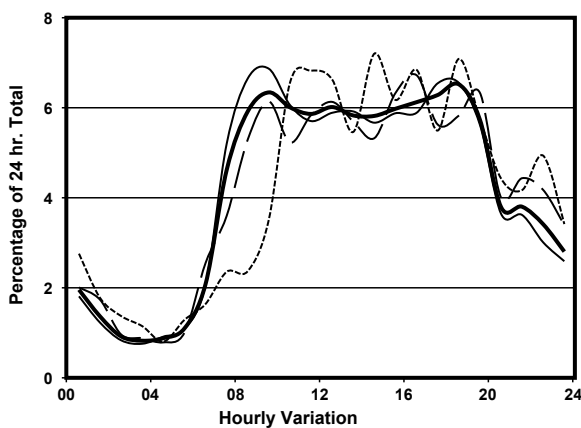
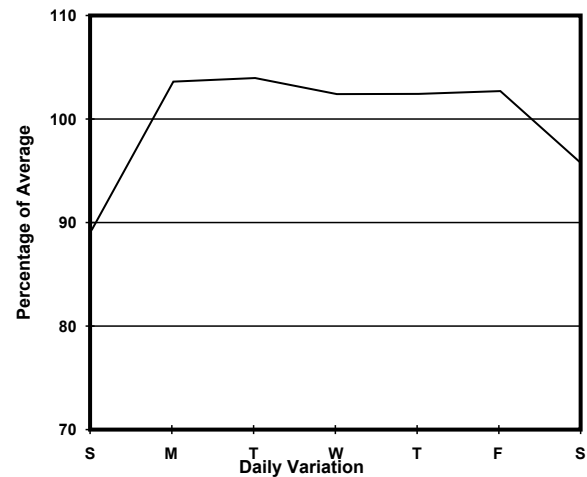
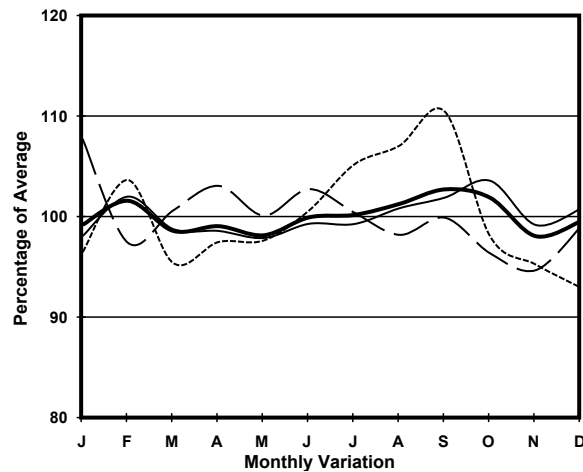
ROAD NETWORK MAJOR

ROAD TYPE RURAL TRUNK ROAD

LINK CASTLE PEAK RD - YUEN LONG (from YUEN LONG ON LOK RD to KAM TIN RD)



## 1. TRAFFIC FLOW VARIATION AND GROWTH



— All day    - - - - - Mon.- Fri.    ..... Sat.    - . - . - Sun.

## 2. TRAFFIC CHARACTERISTICS (BY DIRECTION)

Parameter	All - Day	Mon. - Fri.	Sat.	Sun.
<b>EAST BOUND</b>				
A.A.D.T.	11580	12410	10100	9400
R 12 / 24 - %	71.4	73.2	64.3	66.7
R 16 / 24 - %	88.7	89.4	85.6	87.2
AM Peak Hour	0800-0900	0800-0900	0800-0900	0900-1000
One-way flow at AM peak hour	880	1040	800	290
T - % (AM)	-	-	-	-
PM Peak Hour	1600-1700	1700-1800	1600-1700	1600-1700
One-way flow at PM peak hour	750	830	510	800
T - % (PM)	-	-	-	-
Prop.of commercial vehicles - 16 hr.	-	-	-	-
<b>WEST BOUND</b>				
A.A.D.T.	17720	17950	18130	16890
R 12 / 24 - %	71.3	72.6	69.7	66.4
R 16 / 24 - %	87.6	88.2	87.3	85
AM Peak Hour	0900-1000	0900-1000	0900-1000	0900-1000
One-way flow at AM peak hour	1140	1270	1080	640
T - % (AM)	-	-	-	-
PM Peak Hour	1800-1900	1800-1900	1600-1700	1800-1900
One-way flow at PM peak hour	1230	1260	1390	1110
T - % (PM)	-	-	-	-
Prop.of commercial vehicles - 16 hr.	-	-	-	-

## 3. OTHER INFORMATION AND COMMENT